

OUR READERS, YOUR CUSTOMERS

Wealden Times *Media pack 2024*

Unrivalled Distribution

Copies
18,000

Outlets
131

Towns & Villages
65

Wealden Times is strategically distributed
to reach the right audience



You will find the latest issue of Wealden Times in
prestige retail outlets in key towns and villages across
Kent and Sussex. These outlets love the magazine as it
draws our affluent readers into their stores each month.

Ashford	Headcorn	Rye
Battle	Heathfield	Sandhurst
Benenden	Hildenborough	Sedlescombe
Bexhill	Horsham	Sellingle
Biddenden	Hurst Green	Sevenoaks
Bromley	Hythe	Sissinghurst
Burwash	Kings Hill	Stone Cross
Canterbury	Lewes	Tenterden
Charing	Maidstone	Ticehurst
Cranbrook	Marden	Tonbridge
Crowborough	Mayfield	Tunbridge Wells
East Grinstead	Northiam	Uckfield
Eridge	Nutley	Wadhurst
Faversham	Orpington	West Malling
Flimwell	Paddock Wood	Westerham
Goudhurst	Peasmarsh	Whitstable
Hastings	Pluckley	Winchelsea
Hawkhurst	Robertsbridge	
Haywards Heath	Rolvenden	

SUPERMARKETS:

Tesco, Sainsbury's, Asda & Morrisons

Aylesford	Folkestone	Sevenoaks
Broadstairs	Hastings	St Leonards on Sea
Canterbury	Hythe	Tenterden
Chislehurst	Maidstone	Tunbridge Wells
Faversham	Orpington	Whitstable



STATIONS:

We have the exclusive distribution rights at
our key commuter stations targeting key working
women, and of course those on a great day out!

Ashford International	Staplehurst
Hildenborough	Tonbridge
Maidstone East	Tunbridge Wells
Orpington	Wadhurst
Paddock Wood	West Malling
Sevenoaks	

Editorial Features

Alongside our supplements, our aspirational editorial features deliver a wealth of ideas, products and experiences to enhance readers' homes and lifestyles

Regular Features

Homes

We champion 'local' in all of our features, spotlight designers, artists, retailers – all that the area has to offer. Each month we showcase two beautiful homes from the region, then curate 'Get The Look' pages to further inspire our readers. It's one of our most popular features.

Gardens

Outdoor spaces have always been important to our readers but since lockdown they have spent more time in (and more money improving) their gardens. We strive to provide informative, must-read features each month that are packed with practical expert advice. You'd expect nothing less from two magazines created in the Garden of England!

Food

Our food features offer a host of new and delicious recipes each month, many of which feature local, seasonal produce. These pages are extremely popular, and our past recipes are also available on our website. Please contact us if you would like to sponsor this section of our website.

Fashion

We hand-pick boutique fashion and accessories for our shoots, combining them with popular and much-loved high street brands – which is exactly how our readers shop.

Education

We are fortunate to be surrounded by a wealth of independent schools in the South East. One recurring feature is 'Meet The Head', an interview with a head teacher offering insight into the opportunities available at some of the region's finest educational establishments.

June Education

This June we're publishing an Education Supplement that will deliver the very latest on the plans, performance and schooling opportunities in the finest schools across the South East. Our readers will get to know more about the teachers who lead them, the subjects and activities where they excel, and what's in store for the years ahead.





Wealden Times & Surrey Homes Supplements & Features 2024

	Main Supplements	Features
January 2024	Good Living Supplement Start the year as you mean to go on with some proper self care. Inc. private healthcare, spas, travel & cruises	
February 2024	Education We go straight to the schools for the latest education news from across the South East	Art – Galleries
March 2024	Kitchen & Bathroom A celebration of the freshest decor and inspirational design to revamp your home for 2024. Inc. restoration	Travel
April 2024	Garden Make the most of your green space with advice from our resident gardening experts and ideas of how to create your outdoor haven with garden buildings, furniture and more.	Staycations
May 2024	Love your home (interiors-based) Create the ultimate haven with trend-led furniture, flooring and lighting with expert input from interior designers	Festivals (literature, music, cars, food & drink)
June 2024	Education Our bumper Education Annual takes an in depth look at the wealth of education opportunities this area has to offer	Auction houses
July 2024	Property Property searches, planning & architects, prepping homes for sale, valuations, buy to let etc.	Tunbridge Wells special (a Wealden Times exclusive)
August 2024	Taste of the South East Supplement A foodie's paradise. Uncover the tasty treats the South East has to offer and find out where to experience them	
September 2024	Education The third and final instalment of our look at independent schools for 2024	
October 2024	Luxe Supplement We explore all the finest things including jewellery, watches, cars, race horses, financial advice, once-in-a-lifetime holidays, investments, wine, art, luxury items	
November 2024	Christmas Supplement Pt1 Food & drink, restaurants, wines – plus the first part in our run down of the best gift ideas 2024 has to offer	
December 2024	Christmas Supplement Pt2 Table settings, wrapping, gifts, New Year – plan a festive season to truly look forward to with decoration, gifting, food and drink ideas to thrill the whole family	





Wealden Times & Surrey Homes

Supplements & Features 2024

January

Supplement – Good Living

Start the year as you mean to go on with some proper self care. Alongside our regular health and beauty articles, we'll be taking a closer look at private hospital and GP services and getting the latest specialist info. from dental and optical practices. There will be plenty of inspiration to pamper and relax with editorial on spas, travel and cruises, too.

February

Supplement – Education

We go straight to the schools for the latest education news from across the South East. We'll speak to some of the finest independent schools who will be sharing exciting news and informative views to help you select the best educational fit for your child.

Mini feature – Art Galleries

Discover beautiful artworks from a range of galleries across the South East

March

Supplement – Kitchen & Bathroom

A celebration of the freshest decor and inspirational design to revamp your home for 2024. We'll also be taking a look at some inspiring extension projects to see how homeowners have incorporated a brand new kitchen or bathroom into an existing property.

Mini feature – Travel

Get away from it all with an edit of dream destinations

April

Supplement – Garden

Make the most of your green space with advice, tips and tricks from our resident gardening experts alongside ideas of where to shop to create the outdoor haven you've always dreamed of. This will also include a showcase of stunning outdoor buildings.

Mini feature – Staycations

Explore some of the finest places to take a break, just a stone's throw from home

May

Supplement – Love your home (interiors focus)

A visual guide to the very best furniture, flooring and lighting, alongside expert input from talented interior designers.

Mini feature – Festivals

Expand your mind with a guide to the wide and colourful variety of festivals on offer across Kent, Sussex and Surrey. From literature and music to cars and food & drink, there will be mentions to tempt everyone.

June

Supplement – Education

Our bumper Education Annual takes an in depth look at the wealth of education opportunities this area has to offer

Mini feature – Auction houses

Bid to your heart's content with an insider's guide to buying at auction. We'll also take a look at some memorable lots and explore what's trending now.





Wealden Times & Surrey Homes

Supplements & Features 2024 continued...

July

Supplement – Property

We take an in-depth look at all-things property – think searches, advice from planners and architects, how to prep your home for sale, info. on valuations, and tips for buy-to-lets etc.

Mini feature – Wealden Times Exclusive

We'll be combining town and country living for the weekend with a trip to bustling Royal Tunbridge Wells. Let our Royal Tunbridge Wells focus be your guide to the very best this unique town has to offer. From food and shopping to accommodation and events, there'll be plenty to pack into your diary throughout your stay.

August

Supplement – Taste of the South East

A foodie's paradise. Uncover the tasty treats the South East has to offer and find out where to experience them

Mini feature – Planning consent

Thinking of embarking on a new building project? Find out what permissions are needed and when, who to contact and how to get started.

September

Supplement – Education

The third and final instalment of our look at independent schools for 2024.

October

Supplement – Luxe

Glam up with all-things luxury. Our edit of the finest jewellery, watches, accessories, wine, art and cars, alongside profitable investments.

November

Supplement – Christmas Supplement Pt1

Our run down of the best gift ideas 2024 has to offer. We'll also be taking a special look at restaurants, food & drink.

December

Supplement – Christmas Supplement Pt2

Think table settings, wrapping, gifts and plans for New Year. Coordinate a festive season to truly look forward to with plenty more advice on decoration, food and drink ideas to thrill the whole family



Education

Connect your school with prospective parents and students

Opportunities

Each month our editorial pages offer an insight into local schools and hot topics in education.

Our 3 supplements, in February, June & September, offer a more in-depth view on what's important for children and their education and help parents in their selection of the school for their own children.

NB. The copy deadlines for editorial in the supplement are on request, but early to accommodate school term times. Please see our Education Calendar.

Meet the Head

This hugely popular DPS is a must-read for all parents and the perfect marketing and PR tool for key schools. The DPS consists of a whole page advertisement and whole page editorial.

Our editorial team will interview the Head of School and the piece will be approx. 550 words plus a visual. There will be the opportunity to proof the editorial.

Wealden Times	£1,620
Surrey Homes	£1,230

Wealden Times
18,000
circulation

Surrey Homes
12,000
circulation

Fair Show Guides 2024

May & November Issue

The ever-popular Midsummer & Midwinter Fairs attract over 8,500 visitors to each event. The Fair Show Guide is the key driver for these visitors. We print 35,000 copies of the A5 show guide and advertising in this guide is popular with schools.

Whole Page	£730
Half Page	£410

"Having worked closely with Wealden Times for many years, we are always impressed with their professionalism, quality and integrity. It is always a pleasure to work with them"

Pippa Goodridge, Sutton Valence School



ASHFORD SCHOOL

ESSE QUAM VIDERI

1898 2023

INSPIRING MINDS FOR 125 YEARS

ashfordschool.co.uk

admissions@ashfordschool.co.uk

Registered Charity No. 1010318



Meet the Head

We've been getting to know Ashford School's Mr Tiley-Nunn

What did you study at university?
Having known since as long as I can remember that I wanted to be a primary school teacher, I studied Primary Education at Canterbury Christ Church University. My specialisms were PE, Science and Inclusion.

Tell us a little bit about your career so far...
I started my career at Woodbridge School, in Suffolk, splitting my time between the classroom and Games fields, as well as taking on roles leading ICT and working with headteachers. I then moved as part of the founding team to set up Radnor House in Trondheim, where I was Assistant Head (Primary) and SENCo across both the Prep and Senior School. Next came a Deputy Headship at The CMS School in Henstead back in Suffolk. In this time, I also acted as a Regional Lead in Mathematics for a large academy. Then I took on my first headship at Norwich High School for Girls, in a period of substantial success where we were named 'School of the Year' and awarded the Prep School of the Year. Since September 2020, I have been at Ashford Prep School and I have loved every minute of my three years here so far.

What makes you proud to head up Ashford Prep?
We have an ethos at Ashford Prep School of 'Always Be Caring' and it is when I see our pupils embodying this ethos on a daily basis that I am most proud to be part of this amazing school. We challenge our pupils to not only care for themselves and others, but also to care deeply about giving their best to everything that they do.

Can you tell us about a favourite teacher from your own school days and how they shaped your experience of school?
My favourite teacher was my physics teacher who also happened to be my headteacher, Mr. Cole. He always had time for everyone and you knew that he truly cared for all of his pupils. I still have a letter from him congratulating me for my performance in Science in 'The Wizard of Oz' aged 10. I went on to work for him at Woodbridge School and he was just as inspiring as a boss and is the reason why I wanted to become a headteacher.

What's been your most memorable moment in your role at Ashford Prep so far?
There are so many to choose from, but if I had to pick one it would be awarding our first group of Year 6 pupils their Pre-Senior Baccalaureate award this year - there were so special because they represented a huge amount of work and dedication from our pupils to become the most rounded young people that they could possibly become.

What do you do to unwind after a busy week?
With two small children myself, unwinding can be challenging at times. That being said, I am at my happiest when outside with my family, especially on walks with our Cocker Spaniel, Maisie. Kent has such beautiful countryside and coastline to explore. Other than that, I love to play hockey and cricket, as well as trying to stay upright on the slopes as an enthusiastic skier.

You're a published author - what is it about primary pupils that led you to start writing?
Being entirely honest it was my own fear and disillusionment in the subject as a pupil that made me want to write 'How to Teach Primary Maths'. It is such a vital subject to get right and I believe that every pupil should leave primary school with an enjoyment and confidence in mathematics.

What are you looking forward to next year?
It is difficult to pin it down to one thing but I would say that I am most looking forward to our Creative and Performing Arts programme, which has improved exponentially in the last year. We have some seriously talented and creative pupils at our school and seeing them perform with such confidence and enthusiasm is always a highlight for me.

Can you tell us your favourite book, podcast and song?
The book is *Humanimal* by Burger Begman, a podcast would be *Eldorado* and for the song, I'd choose *Islands* by The xx.

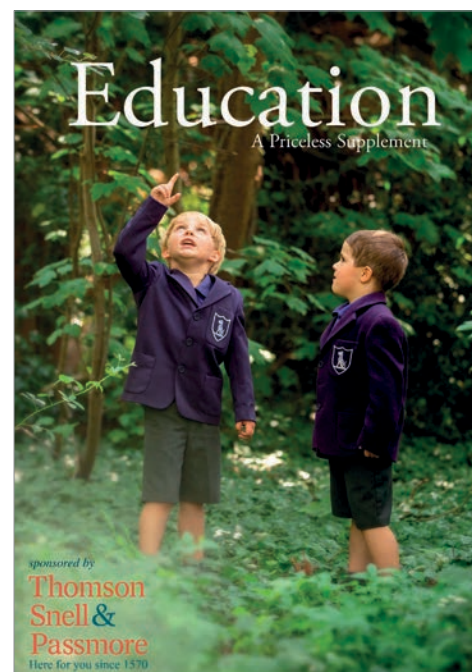
To find out more about Ashford School visit ashfordschool.co.uk

priceless-magazines.com

Education Calendar

School Year 2023 - 2024

October 2023	Meet the Head (or key members of staff) Education piece – Open days
November 2023	Meet the Head (or key members of staff) Education piece – Thought piece
December 2023	Meet the Head (or key members of staff) Education piece – Christmas show or musical
January 2024	Meet the Head (or key members of staff) Education piece – Online schools
February 2024	Education Supplement – 24 pages Copy deadline 27th November 2023 Content – Editorial of your choice to include: <ul style="list-style-type: none"> • Opportunities for Students to Develop Confidence • Developing Resilience • Art – Showcase the best of your students' artwork. • Boarding • Changing Schools for 6th Form <ul style="list-style-type: none"> • Getting Ahead in a Changing World • Languages – latest trends in language teaching/languages for the future • Student Leadership – We'd love to meet your Student Leaders or hear about your school council or equivalent.
March 2024	Meet the Head (or key members of staff) Education piece – Charity and community activity
April 2024	Meet the Head (or key members of staff) Education piece - TBC
May 2024	Meet the Head Education piece – Top tips to keep kids (and you!) sane in exam season
June 2024	Education Supplement – 24 pages Copy deadline 10th March 2024 Content TBC <ul style="list-style-type: none"> • The News Boards – open days & introducing staff • School Grounds & Facilities • School Trips – home & abroad • Meet the Head Student
July 2024	Meet the Head (or key members of staff) Education piece – Focus on Extra-curricular activities
August 2024	Meet the Head (or key members of staff) Education piece – What to look out for and what to ask at an open day
September 2024	Education Supplement covering 5-18 years – 16 pages Copy deadline 3rd June 2024 Content TBC
October 2024	Open Day Focus Education piece – Thought piece



Advertising Rates

September 2024

Explore a comprehensive range of extra options available

All display advertisements are included in the digital edition with click through to your website.

All rates exclude VAT and are on a per issue basis.

	Wealden Times	Surrey Homes
Full page	£1,460	£1,100
Half Page	£905	£640
Quarter Page	£510	£390
OBC	£2,010	£1,510
IBC / IFC	£1,730	£1,250
IFC - Double Page Spread	£2,800	£1,900
Right Hand Page	+10%	+10%
Advertorial Pages	+25%	+25%
What's On List*	£85	£55

*Supply up to 150 words that include date, time & venue.

Inserts & Specials

We are able to carry loose and bound-in inserts. We ask to see a mock-up of any insert before we accept a booking.

Loose inserts start at £75 per thousand.

SPONSORSHIP OF SUPPLEMENTS

Price on application



Our Focus Determines Your Reality

STAPLEHURST
STRIKING GRADE II LISTED MID-19TH CENTURY VILLA

A semi-circular in and out driveway leads to this family home which is bordered by Grade II Listed Spearhead railings to the front. Exhibiting the character features synonymous with the period of the property from high ceilings to picture rails, Stucco exterior to decorative fireplaces, the well-proportioned family accommodation is complemented by the charming garden and a detached one bedroom annexe • Sitting room • Dining room • Study • Conservatory • Kitchen • Utility Room with Larder • Double aspect principal bedroom, ensuite • Three double bedrooms • Family bathroom • One bedroom annexe • Charming enclosed garden • EPC: n/a

£1,195,000

Sales & Lettings Team

James, Emma, Sarah, Rachel, Nicola, Victoria, Rebecca, Catherine, Eleanor, Kirsten

Harpers & Hurlingham
The Cornhill House, Stone Street, Guildford
01580 715400
www.harpersandhurlingham.com

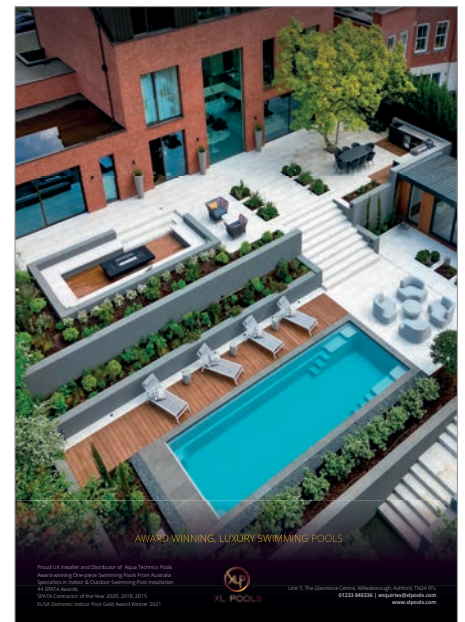
Download our app to explore more uni essentials

OFF TO UNI

From pasta bowls to won't-let-you-down laptops, find everything but the kitchen sink to help set them up for uni life.

JOHN LEWIS & PARTNERS

IN STORE | ONLINE | APP



Deadlines 2024

Wealden Times & Surrey Homes

JANUARY 2024

12 December 2023 – Final Copy Deadline
22 December 2023 – Magazine Distributed

FEBRUARY 2024

16 January 2024 – Final Copy Deadline
29 January 2024 – Magazine Distributed

MARCH 2024

13 February 2024 – Final Copy Deadline
26 February 2024 – Magazine Distributed

APRIL 2024

15 March 2024 – Final Copy Deadline
25 March 2024 – Magazine Distributed

MAY 2024

12 April 2024 – Final Copy Deadline
29 April 2024 – Magazine Distributed

JUNE 2024

14 May 2024 – Final Copy Deadline
27 May 2024 – Magazine Distributed

JULY 2024

14 June 2024 – Final Copy Deadline
24 June 2024 – Magazine Distributed

AUGUST 2024

19 July 2024 – Final Copy Deadline
29 July 2024 – Magazine Distributed

SEPTEMBER 2024

15 August 2024 – Final Copy Deadline
26 August 2024 – Magazine Distributed
Tuesday due to Bank Holiday

OCTOBER 2024

11 September 2024 – Final Copy Deadline
30 September 2024 – Magazine Distributed

NOVEMBER 2024

16 October 2024 – Final Copy Deadline
28 October 2024 – Magazine Distributed

DECEMBER 2024

13 November 2024 – Final Copy Deadline
25 November 2024 – Magazine Distributed

JANUARY 2025

12 December 2024 – Final Copy Deadline
23 or 30 December 2024 – Magazine Distributed TBC

FEBRUARY 2025

16 January 2025 – Final Copy Deadline
27 January 2025 – Magazine Distributed

Mechanical Data

Full Page (A4)

210mm(wide) x 297mm(tall)
+3mm Bleed on all edges
Text needs to be inset approx
10mm from page edge

Double Page Spread (A3)

420mm(wide) x 297mm(tall)
+3mm Bleed on all edges.
Text needs to be inset
approx 10mm from
page edge and gutter.

Half Page Horizontal

185mm(wide) x 130mm(tall)

Half Page Vertical

90mm(wide) x 265mm(tall)

Quarter Page

90mm(wide) x 130mm(tall)

Eighth

90mm(wide) x 62.5mm(tall)



Preferred Formats

Print ready PDF, High resolution JPG or TIFF.

Acceptable Artwork Formats

Adobe Photoshop, Illustrator, InDesign.

Unacceptable Artwork Formats

Microsoft Word, Publisher, Powerpoint or
Microsoft Works.

File Requirements

Fonts and graphics to be supplied with all
nonpreferred format documents
(please confirm format before sending).

Deadlines

To ensure the highest quality of artwork, please
supply copy well in advance of deadline.

Unique Reference

Please name documents clearly with the advertiser
name, followed by "WT" for Wealden Times or "SH"
for Surrey Homes, and the issue you'd like the ad to
appear in e.g. MyBusinessNameWT155

Supply Details

email: designteam@wealdentimes.co.uk

For more information, please get in touch

Wealden Times, Kettle Chambers,

21 Stone Street, Cranbrook, Kent TN17 3HF

01580 714705 or email sales@wealdentimes.co.uk

(Monday–Thursday 9am–5.30pm, Friday 9am–5pm)

Wealden Times Fair

Show Guide

What you need to know as an advertiser

The Show Guide lists exhibitors at Wealden Times Midwinter Fair alongside essential information for those attending.

- A5, 48-page printed publication with a 35,000 print run for each guide.
- 18,000 copies of the Show Guide are distributed in the May & November issue of Wealden Times.
- Approx. 12,000 copies are inserted in competitive press with the remainder distributed at the Fairs, from 6th-8th June 2024, at Hole Park, Rolvenden and 14th-16th November 2024 at The Hop Farm, Paddock Wood.
- Wealden Times Midsummer & Midwinter Fairs are visited by 9,000+ people at each Fair.
- Our affluent, ABC1 female readers love the event and the Show Guide is an essential part of the show. The perfect way to reach 35,000 shoppers who love local!

35,000
circulation

9,000+
visitors

MIDSUMMER GUIDE 2024

Copy Deadline

5th April 2024

Publication Date

27th May 2024

MIDWINTER GUIDE 2024

Copy Deadline

4th October 2024

Publication Date

28th October 2024

Advertising rates

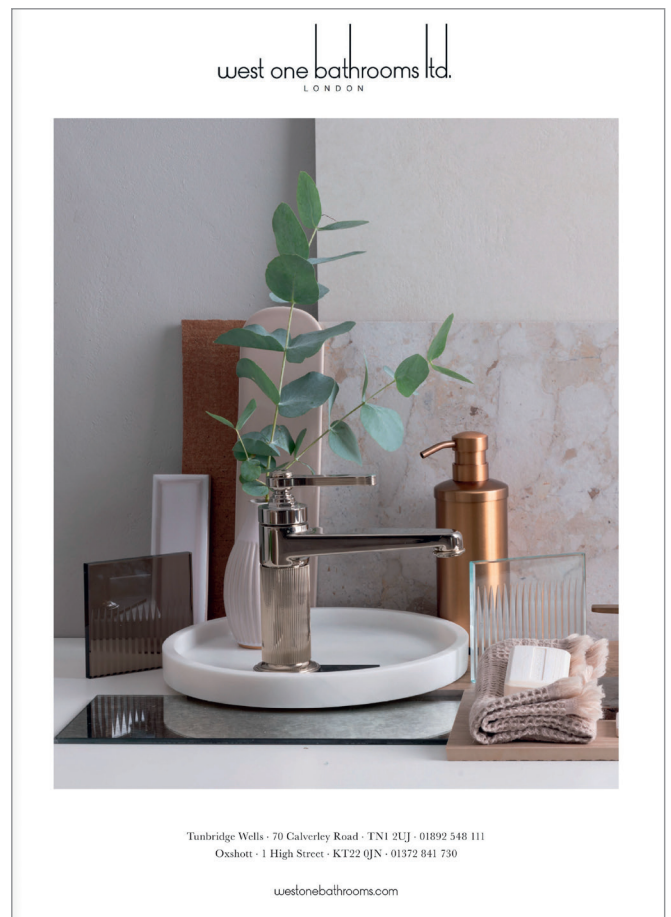
Whole Page	£730 + VAT
OBC	£1070 +VAT
DPS	£1452 +VAT

Sponsorship of the event is also available

Contact

Maria Hurley, Sales Manager
01580 236073
maria.hurley@wealdentimes.co.uk





Contact Us

Wealden Times

Maria Hurley
Sales Manager
maria.hurley@wealdentimes.co.uk

Sarah Norwood
Senior Account Manager
sarah.norwood@wealdentimes.co.uk

Andrew Boughton
Senior Account Manager
andrew.boughton@wealdentimes.co.uk

Surrey Homes

Lisa Gordon-Hughes
Sales Manager
lisa.gordon-hughes@surrey-homes.co.uk

Vivien Cotterill-Lee
Managing Director
vivien.cotterill-lee@priceless-group.com

Lucy Fleming
Editor
lucy.fleming@priceless-group.com

Rebecca Cuffe
Supplements & Features Editor
rebecca.cuffe@priceless-group.com

Emily Pavey
Sub Editor
emily.pavey@priceless-group.com

Anthony Boxall
Design Director
anthony.boxall@priceless-group.com

Call us
01580 236073

Visit Us

Priceless Media
Kettle Chambers
21 Stone Street
Cranbrook
Kent
TN17 3HF