

# OUR READERS, YOUR CUSTOMERS

Wealden Times *Media pack 2024*

# Unrivalled Distribution

Copies  
18,000

Outlets  
131

Towns & Villages  
65

Wealden Times is strategically distributed  
to reach the right audience



You will find the latest issue of Wealden Times in  
prestige retail outlets in key towns and villages across  
Kent and Sussex. These outlets love the magazine as it  
draws our affluent readers into their stores each month.

Ashford	Headcorn	Rye
Battle	Heathfield	Sandhurst
Benenden	Hildenborough	Sedlescombe
Bexhill	Horsham	Sellindge
Biddenden	Hurst Green	Sevenoaks
Bromley	Hythe	Sissinghurst
Burwash	Kings Hill	Stone Cross
Canterbury	Lewes	Tenterden
Charing	Maidstone	Ticehurst
Cranbrook	Marden	Tonbridge
Crowborough	Mayfield	Tunbridge Wells
East Grinstead	Northiam	Uckfield
Eridge	Nutley	Wadhurst
Faversham	Orpington	West Malling
Flimwell	Paddock Wood	Westerham
Goudhurst	Peasmarsh	Whitstable
Hastings	Pluckley	Winchelsea
Hawkhurst	Robertsbridge	
Haywards Heath	Rolvenden	

## SUPERMARKETS:

Tesco, Sainsbury's, Asda & Morrisons

Aylesford	Folkestone	Sevenoaks
Broadstairs	Hastings	St Leonards on Sea
Canterbury	Hythe	Tenterden
Chislehurst	Maidstone	Tunbridge Wells
Faversham	Orpington	Whitstable



## STATIONS:

We have the exclusive distribution rights at  
our key commuter stations targeting key working  
women, and of course those on a great day out!

Ashford International	Staplehurst
Hildenborough	Tonbridge
Maidstone East	Tunbridge Wells
Orpington	Wadhurst
Paddock Wood	West Malling
Sevenoaks	



# Editorial Features

Alongside our supplements, our aspirational editorial features deliver a wealth of ideas, products and experiences to enhance readers' homes and lifestyles

## Regular Features

### Homes

We champion 'local' in all of our features, spotlight designers, artists, retailers – all that the area has to offer. Each month we showcase two beautiful homes from the region, then curate 'Get The Look' pages to further inspire our readers. It's one of our most popular features.

### Gardens

Outdoor spaces have always been important to our readers but since lockdown they have spent more time in (and more money improving) their gardens. We strive to provide informative, must-read features each month that are packed with practical expert advice. You'd expect nothing less from two magazines created in the Garden of England!

### Food

Our food features offer a host of new and delicious recipes each month, many of which feature local, seasonal produce. These pages are extremely popular, and our past recipes are also available on our website. Please contact us if you would like to sponsor this section of our website.

### Fashion

We hand-pick boutique fashion and accessories for our shoots, combining them with popular and much-loved high street brands – which is exactly how our readers shop.

### Education

We are fortunate to be surrounded by a wealth of independent schools in the South East. One recurring feature is 'Meet The Head', an interview with a head teacher offering insight into the opportunities available at some of the region's finest educational establishments.

### June Education

This June we're publishing an Education Supplement that will deliver the very latest on the plans, performance and schooling opportunities in the finest schools across the South East. Our readers will get to know more about the teachers who lead them, the subjects and activities where they excel, and what's in store for the years ahead.





# Wealden Times & Surrey Homes Supplements & Features 2024

	Main Supplements	Features
January 2023	<b>Good Living Supplement</b> ..... Start the year as you mean to go on with some quality self care. Inc. private healthcare, spas, travel & cruises	
February 2023	<b>Education</b> ..... We go straight to the schools for the latest education news from across the South East	..... <b>Art – Galleries</b>
March 2023	<b>Kitchen &amp; Bathroom</b> ..... A celebration of the freshest decor and inspirational design to revamp your home for 2024. Inc. restoration	..... <b>Travel</b>
April 2023	<b>Garden</b> ..... Make the most of your green space with advice from our resident gardening experts and ideas of how to create your outdoor haven with garden buildings, furniture and more.	..... <b>Staycations</b>
May 2023	<b>Love Your Home</b> ..... Create the ultimate sanctuary with trend-led furniture, flooring and lighting with expert input from interior designers	..... <b>Festivals (literature, music, cars, food &amp; drink)</b>
June 2023	<b>Education</b> ..... Our bumper Education Annual takes an in-depth look at the wealth of education opportunities this area has to offer	..... <b>Art – Auction houses</b>
July 2023	<b>Health &amp; Wellbeing</b> ..... Menopause & women's health. Psychiatry, Psychology wellbeing & emotional support. Subscriptions and spas. Osteopaths, podiatrists and reflexologists	..... <b>Growing older</b>
August 2023	<b>Taste of the South East Supplement</b> ..... A foodie's paradise. Uncover the tasty treats the South East has to offer and find out where to experience them	..... <b>Planning consent</b>
September 2023	<b>Education</b> ..... The third and final instalment of our look at independent schools for 2024	
October 2023	<b>Luxe Supplement</b> ..... We explore all the finest things including jewellery, watches, cars, race horses, investments, wine, art, luxury items	..... <b>Property</b> (property searches, prepping homes for sale, valuations, buy to let etc)
November 2023	<b>Christmas Gift Guide</b> ..... Our run down of the best gift ideas 2024 has to offer	
December 2023	<b>Christmas Supplement</b> ..... Plan a festive season to truly look forward to with decoration, gifting, food and drink ideas to thrill the whole family	







# Wealden Times & Surrey Homes

## Supplements & Features 2024

### January

#### Supplement – Good Living

Start the year as you mean to go on with some quality self care. Alongside our regular health and beauty articles, we'll be taking a closer look at private hospital and GP services and getting the latest specialist info from dental and optical practices. There will be plenty of inspiration to pamper and relax with editorial on spas, travel and cruises, too.

### February

#### Supplement – Education

We go straight to the schools for the latest education news from across the South East. We'll speak to some of the finest independent schools who will be sharing exciting news and informative views to help you select the best educational fit for your child.

#### Mini feature – Art Galleries

Discover beautiful artwork from a range of galleries across the South East.

### March

#### Supplement – Kitchen & Bathroom

A celebration of the freshest decor and inspirational design to revamp your home for 2024. We'll also be taking a look at some inspiring extension projects to see how homeowners have incorporated a brand new kitchen or bathroom into an existing property.

#### Mini feature – Travel

Get away from it all with an edit of dream destinations.

### April

#### Supplement – Garden

Make the most of your green space with advice, tips and tricks from our resident gardening experts alongside ideas of where to shop to create the outdoor haven you've always dreamed of. This will also include a showcase of stunning outdoor buildings.

#### Mini feature – Staycations

Explore some of the finest places to take a break, just a stone's throw from home.

### May

#### Supplement – Love Your Home

A visual guide to the very best furniture, flooring and lighting, alongside expert input from talented interior designers.

#### Mini feature – Festivals

Expand your mind with a guide to the wide and colourful variety of festivals on offer across Kent, Sussex and Surrey. From literature and music to cars and food & drink, there will be mentions to tempt everyone.

### June

#### Supplement – Education

Our bumper Education Annual takes an in-depth look at the wealth of education opportunities this area has to offer.

#### Mini feature – Auction houses

Bid to your heart's content with an insider's guide to buying at auction. We'll also take a look at some memorable lots and explore what's trending.





# Wealden Times & Surrey Homes

## Supplements & Features 2024 continued...

### July

#### Supplement – Health & Wellbeing

An in-depth exploration of menopause & women's health. We'll find out how to heal and find emotional support by speaking to therapists and psychologists; uncover the best health subscriptions and spas and find out how to maintain flexibility and muscle tone with advice from osteopaths, podiatrists and reflexologists.

#### Mini feature – Growing older

Take a look at luxury retirement living, get to know the companies offering care designed for elderly relatives and make sure you're informed with expert advice on legal considerations.

### August

#### Supplement – Taste of the South East

A foodie's paradise. Uncover the tasty treats the South East has to offer and find out where to experience them.

#### Mini feature – Planning consent

Thinking of embarking on a new building project? Find out what permissions are needed and when, who to contact and how to get started.

### September

#### Supplement – Education

The third and final instalment of our look at independent schools for 2024.

### October

#### Supplement – Luxe

Glam up with all-things luxury. Our edit of the finest jewellery, watches, accessories, wine, art and cars, alongside profitable investments.

#### Mini feature – Property

How to prep your home for a speedy sale, the best buy-to-let advice, tips from property search agents and where to go for a valuation.

### November

#### Supplement – Christmas Gift Guide

Our rundown of the best gift ideas 2024 has to offer. Grouped by recipient and theme, our easy-to-navigate guide is packed with presents galore.

### December

#### Supplement – Christmas

Plan a day to truly look forward to with decoration, gifting, food and drink ideas to thrill the whole family. Find last minute gifts, stocking fillers, Christmas cards and wrapping alongside table setting ideas, eats and treats. Top local chefs will be giving their tips for Christmas entertaining and we'll have a sprinkling of sparkling ideas for the ultimate New Year's celebration.





# Education

Connect your school with prospective parents and students

## Opportunities

Each month our editorial pages offer an insight into local schools and hot topics in education.

Our 3 supplements, in February, June & September, offer a more in-depth view on what's important for children and their education and help parents in their selection of the school for their own children.

NB. The copy deadlines for editorial in the supplement are on request, but early to accommodate school term times. Please see our Education Calendar.

## Meet the Head

This hugely popular DPS is a must-read for all parents and the perfect marketing and PR tool for key schools. The DPS consists of a whole page advertisement and whole page editorial.

Our editorial team will interview the Head of School and the piece will be approx. 550 words plus a visual. There will be the opportunity to proof the editorial.

Wealden Times £1,620  
Surrey Homes £1,230

Wealden Times  
18,000  
circulation

Surrey Homes  
12,000  
circulation

## Fair Show Guides 2024

### May & November Issue

The ever-popular Midsummer & Midwinter Fairs attract over 8,500 visitors to each event. The Fair Show Guide is the key driver for these visitors. We print 35,000 copies of the A5 show guide and advertising in this guide is popular with schools.

Whole Page £730  
Half Page £410

*"Having worked closely with Wealden Times for many years, we are always impressed with their professionalism, quality and integrity. It is always a pleasure to work with them"*

Pippa Goodridge, Sutton Valence School



ASHFORD SCHOOL

ESSE QUAM VIDERI

1898 2023

INSPIRING MINDS FOR 125 YEARS

ashfordschool.co.uk

admissions@ashfordschool.co.uk

Registered Charity No. 1010318



### Meet the Head

We've been getting to know Ashford School's Mr Tiley-Nunn

**What did you study at university?**  
Having known since as long as I can remember that I wanted to be a primary school teacher, I studied Primary Education at Canterbury Christ Church University. My specialisms were PE, Science and Inclusion.

**Tell us a little bit about your career so far...**  
I started my career at Woodbridge School, in Suffolk, splitting my time between the classroom and Games fields, as well as taking on roles leading ICT and working with headteachers. I then moved as part of the founding team to set up Radnor House in Tring, where I was Assistant Head (Primary) and SENCo across both the Prep and Senior School. Next came a Deputy Headship at The CMS School in Henstead, back in Suffolk. In this time, I also acted as a Regional Lead in Mathematics for a large academy. Then I took on my first headship at Norwich High School for Girls, in a period of substantial success where we were named 'School of the Year' and awarded the Prep School of the Year. Since September 2020, I have been at Ashford Prep School and I have loved every minute of my three years here so far.

**What makes you proud to head up Ashford Prep?**  
We have an ethos at Ashford Prep School of 'Always Be Caring' and it is when I see our pupils embodying this ethos on a daily basis that I am most proud to be part of this amazing school. We challenge our pupils to not only care for themselves and others, but also to care deeply about giving their best to everything that they do.

**Can you tell us about a favourite teacher from your own school days and how they shaped your experience of school?**  
My favourite teacher was my physics teacher who also happened to be my headteacher, Mr. Cole. He always had time for everyone and you knew that he truly cared for all of his pupils. I still have a letter from him congratulating me for my performance in Science in 'The Wizard of Oz' aged 10. I went on to work for him at Woodbridge School and he was just as inspiring as a boss and is the reason why I wanted to become a headteacher.

**What's been your most memorable moment in your role at Ashford Prep so far?**  
There are so many to choose from, but if I had to pick one it would be awarding our first group of Year 6 pupils their Pre-Senior Baccalaureate award this year - there were so special because they represented a huge amount of work and dedication from our pupils to become the most rounded young people that they could possibly become.

**What do you do to unwind after a busy week?**  
With two small children myself, unwinding can be challenging at times. That being said, I am at my happiest when outside with my family, especially on walks with our Cocker Spaniel, Maisie. Kent has such beautiful countryside and coastline to explore. Other than that, I love to play hockey and cricket, as well as trying to stay upright on the slopes as an enthusiastic skier.

**You're a published author - what is it about primary pupils that led you to start writing?**  
Being entirely honest it was my own fear and disillusionment in the subject as a pupil that made me want to write 'How to Teach Primary Maths'. It is such a vital subject to get right and I believe that every pupil should leave primary school with an enjoyment and confidence in mathematics.

**What are you looking forward to next year?**  
It is difficult to pin it down to one thing but I would say that I am most looking forward to our Creative and Performing Arts programme, which has improved exponentially in the last year. We have some seriously talented and creative pupils at our school and seeing them perform with such confidence and enthusiasm is always a highlight for me.

**Can you tell us your favourite book, podcast and song?**  
The book is *Humanimal* by Burger Begman, a podcast would be *Eldorado* and for the song, I'd choose *Islands* by The xx.

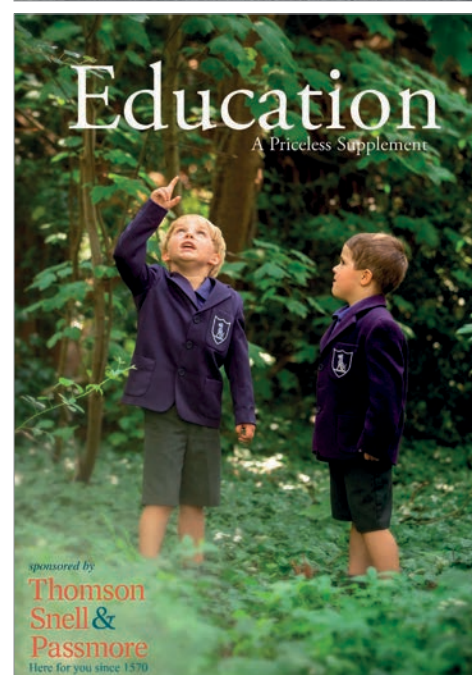
To find out more about Ashford School visit [ashfordschool.co.uk](http://ashfordschool.co.uk)

priceless-magazines.com

# Education Calendar

School Year 2023 - 2024

October 2023	Meet the Head (or key members of staff) Education piece – Open days
November 2023	Meet the Head (or key members of staff) Education piece – Thought piece
December 2023	Meet the Head (or key members of staff) Education piece – Christmas show or musical
January 2024	Meet the Head (or key members of staff) Education piece – Online schools
February 2024	Education Supplement – 24 pages <b>Copy deadline 27th November 2023</b> Content – Editorial of your choice to include: <ul style="list-style-type: none"> <li>• Opportunities for Students to Develop Confidence</li> <li>• Developing Resilience</li> <li>• Art – Showcase the best of your students' artwork.</li> <li>• Boarding</li> <li>• Changing Schools for 6<sup>th</sup> Form <ul style="list-style-type: none"> <li>• Getting Ahead in a Changing World</li> <li>• Languages – latest trends in language teaching/languages for the future</li> </ul> </li> <li>• Student Leadership – We'd love to meet your Student Leaders or hear about your school council or equivalent.</li> </ul>
March 2024	Meet the Head (or key members of staff) Education piece – Charity and community activity
April 2024	Meet the Head (or key members of staff) Education piece - TBC
May 2024	Meet the Head Education piece – Top tips to keep kids (and you!) sane in exam season
June 2024	Education Supplement – 24 pages <b>Copy deadline 10th March 2024</b> Content TBC <ul style="list-style-type: none"> <li>• The News Boards – open days &amp; introducing staff</li> <li>• School Grounds &amp; Facilities</li> <li>• School Trips – home &amp; abroad</li> <li>• Meet the Head Student</li> </ul>
July 2024	Meet the Head (or key members of staff) Education piece – Focus on Extra-curricular activities
August 2024	Meet the Head (or key members of staff) Education piece – What to look out for and what to ask at an open day
September 2024	Education Supplement covering 5-18 years – 16 pages <b>Copy deadline 3rd June 2024</b> Content TBC
October 2024	Open Day Focus Education piece – Thought piece





# Advertising Rates

September 2024

Explore a comprehensive range of extra options available

All display advertisements are included in the digital edition with click through to your website.

All rates exclude VAT and are on a per issue basis.

	Wealden Times	Surrey Homes
Full page	£1,460	£1,100
Half Page	£905	£640
Quarter Page	£510	£390
OBC	£2,010	£1,510
IBC / IFC	£1,730	£1,250
IFC - Double Page Spread	£2,800	£1,900
Right Hand Page	+10%	+10%
Advertorial Pages	+25%	+25%
What's On List*	£85	£55

\*Supply up to 150 words that include date, time & venue.

## Inserts & Specials

We are able to carry loose and bound-in inserts. We ask to see a mock-up of any insert before we accept a booking.

Loose inserts start at £75 per thousand.

## SPONSORSHIP OF SUPPLEMENTS

Price on application



Our Focus Determines Your Reality

**STAPLEHURST**  
STRIKING GRADE II LISTED MID-19TH CENTURY VILLA

A semi-circular in and out driveway leads to this family home which is bordered by Grade II Listed Spearhead railings to the front. Exhibiting the character features synonymous with the period of the property from high ceilings to picture rails, Stucco exterior to decorative fireplaces, the well-proportioned family accommodation is complemented by the charming garden and a detached one bedroom annexe • Sitting room • Dining room • Study • Conservatory • Kitchen • Utility Room with Larder • Double aspect principal bedroom, ensuite • Three double bedrooms • Family bathroom • One bedroom annexe • Charming enclosed garden • EPC: n/a

**£1,195,000**

Sales & Lettings Team

James, Emma, Sarah, Rachel, Nicola, Victoria, Rebecca, Catherine, Eleanor, Nicola

Harpers & Hurlingham  
The Cornhill House, Stone Street, Guildford  
01580 715400  
www.harpersandhurlingham.com

PrimeLocation.com rightmove Zoopla

Download our app to explore more uni essentials

# OFF TO UNI

From pasta bowls to won't-let-you-down laptops, find everything but the kitchen sink to help set them up for uni life.

**JOHN LEWIS & PARTNERS**  
IN STORE | ONLINE | APP



## Deadlines 2024

## Wealden Times & Surrey Homes

## JANUARY 2024

12 December 2023 – Final Copy Deadline  
22 December 2023 – Magazine Distributed

## FEBRUARY 2024

16 January 2024 – Final Copy Deadline  
29 January 2024 – Magazine Distributed

## MARCH 2024

13 February 2024 – Final Copy Deadline  
26 February 2024 – Magazine Distributed

## APRIL 2024

15 March 2024 – Final Copy Deadline  
25 March 2024 – Magazine Distributed

## MAY 2024

12 April 2024 – Final Copy Deadline  
29 April 2024 – Magazine Distributed

**JUNE 2024**

14 May 2024 – Final Copy Deadline  
27 May 2024 – Magazine Distributed

**JULY 2024**

14 June 2024 – Final Copy Deadline  
24 June 2024 – Magazine Distributed

## AUGUST 2024

19 July 2024 – Final Copy Deadline  
29 July 2024 – Magazine Distributed

SEPTEMBER 2024

15 August 2024 – Final Copy Deadline  
26 August 2024 – Magazine Distributed  
Tuesday due to Bank Holiday

OCTOBER 2024

11 September 2024 – Final Copy Deadline  
30 September 2024 – Magazine Distributed

## NOVEMBER 2024

16 October 2024 – Final Copy Deadline  
28 October 2024 – Magazine Distributed

## DECEMBER 2024

**13 November 2024 – Final Copy Deadline**  
**25 November 2024 – Magazine Distributed**

## JANUARY 2025

12 December 2024 – Final Copy Deadline  
23 or 30 December 2024 – Magazine Distributed TBC

## FEBRUARY 2025

16 January 2025 – Final Copy Deadline  
27 January 2025 – Magazine Distributed



# Mechanical Data

## Full Page (A4)

210mm(wide) x 297mm(tall)  
+3mm Bleed on all edges  
Text needs to be inset approx  
10mm from page edge

## Double Page Spread (A3)

420mm(wide) x 297mm(tall)  
+3mm Bleed on all edges.  
Text needs to be inset  
approx 10mm from  
page edge and gutter.

## Half Page Horizontal

185mm(wide) x 130mm(tall)

## Half Page Vertical

90mm(wide) x 265mm(tall)

## Quarter Page

90mm(wide) x 130mm(tall)

## Eighth

90mm(wide) x 62.5mm(tall)



## Preferred Formats

Print ready PDF, High resolution JPG or TIFF.

## Acceptable Artwork Formats

Adobe Photoshop, Illustrator, InDesign.

## Unacceptable Artwork Formats

Microsoft Word, Publisher, Powerpoint or Microsoft Works.

## File Requirements

Fonts and graphics to be supplied with all nonpreferred format documents (please confirm format before sending).

## Deadlines

To ensure the highest quality of artwork, please supply copy well in advance of deadline.

## Unique Reference

Please name documents clearly with the advertiser name, followed by "WT" for Wealden Times or "SH" for Surrey Homes, and the issue you'd like the ad to appear in e.g. MyBusinessNameWT155

## Supply Details

email: [designteam@wealdentimes.co.uk](mailto:designteam@wealdentimes.co.uk)

For more information, please get in touch

Wealden Times, Kettle Chambers,

21 Stone Street, Cranbrook, Kent TN17 3HF

01580 714705 or email [sales@wealdentimes.co.uk](mailto:sales@wealdentimes.co.uk)

(Monday–Thursday 9am–5.30pm, Friday 9am–5pm)

# Wealden Times Fair

## Show Guide

What you need to know as an advertiser

The Show Guide lists exhibitors at Wealden Times Midwinter Fair alongside essential information for those attending.

- A5, 48-page printed publication with a 35,000 print run for each guide.
- 18,000 copies of the Show Guide are distributed in the May & November issue of Wealden Times.
- Approx. 12,000 copies are inserted in competitive press with the remainder distributed at the Fairs, from 6th-8th June 2024, at Hole Park, Rolvenden and 14th-16th November 2024 at The Hop Farm, Paddock Wood.
- Wealden Times Midsummer & Midwinter Fairs are visited by 9,000+ people at each Fair.
- Our affluent, ABC1 female readers love the event and the Show Guide is an essential part of the show. The perfect way to reach 35,000 shoppers who love local!

35,000  
circulation

9,000+  
visitors

### MIDSUMMER GUIDE 2024

#### Copy Deadline

5th April 2024

#### Publication Date

27th May 2024

### MIDWINTER GUIDE 2024

#### Copy Deadline

4th October 2024

#### Publication Date

28th October 2024

#### Advertising rates

Whole Page	£730 + VAT
OBC	£1070 +VAT
DPS	£1452 +VAT

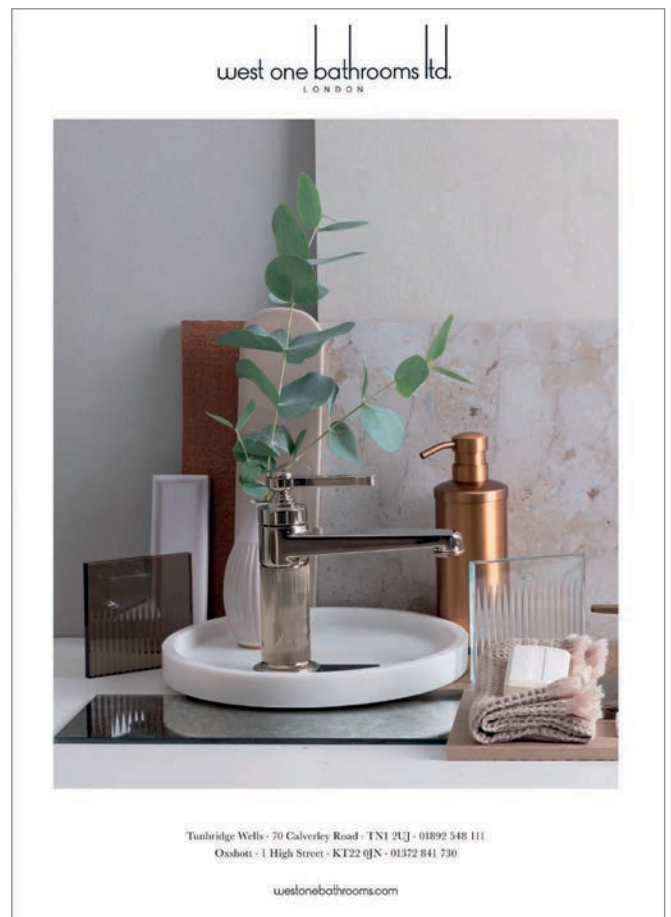
Sponsorship of the event is also available

#### Contact

Maria Hurley, Sales Manager  
01580 236073  
maria.hurley@wealdentimes.co.uk







## Contact Us

### Wealden Times

**Maria Hurley**  
Sales Manager  
[maria.hurley@wealdentimes.co.uk](mailto:maria.hurley@wealdentimes.co.uk)

**Sarah Norwood**  
Senior Account Manager  
[sarah.norwood@wealdentimes.co.uk](mailto:sarah.norwood@wealdentimes.co.uk)

**Marnie Newman**  
Account Executive  
[marnie.newman@priceless-group.com](mailto:marnie.newman@priceless-group.com)

### Surrey Homes

**Lisa Gordon-Hughes**  
Sales Manager  
[lisa.gordon-hughes@surrey-homes.co.uk](mailto:lisa.gordon-hughes@surrey-homes.co.uk)

**Vivien Cotterill-Lee**  
Managing Director  
[vivien.cotterill-lee@priceless-group.com](mailto:vivien.cotterill-lee@priceless-group.com)

**Lucy Fleming**  
Editor  
[lucy.fleming@priceless-group.com](mailto:lucy.fleming@priceless-group.com)

**Rebecca Cuffe**  
Supplements & Features Editor  
[rebecca.cuffe@priceless-group.com](mailto:rebecca.cuffe@priceless-group.com)

**Emily Pavey**  
Sub Editor  
[emily.pavey@priceless-group.com](mailto:emily.pavey@priceless-group.com)

**Anthony Boxall**  
Design Director  
[anthony.boxall@priceless-group.com](mailto:anthony.boxall@priceless-group.com)

**Call us**  
01580 236073

### Visit Us

Priceless Media  
Kettle Chambers  
21 Stone Street  
Cranbrook  
Kent  
TN17 3HF